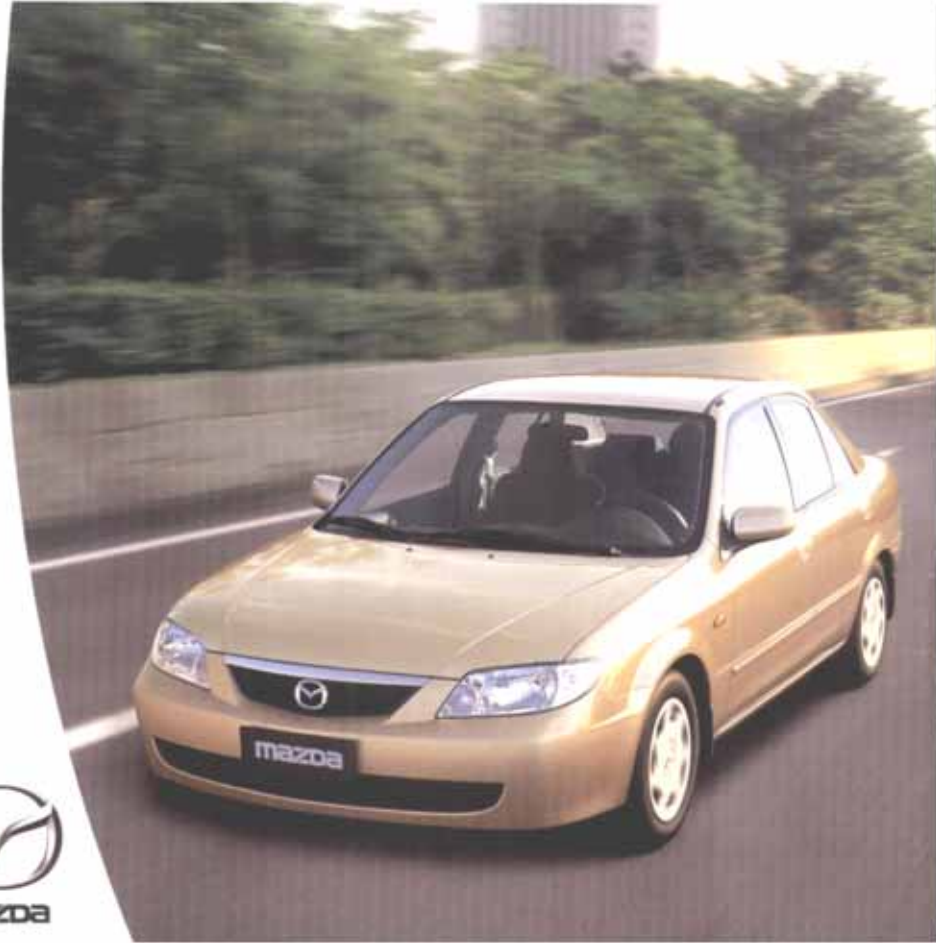




323 F/L

(BVRE, BVSR, BVSS, BVST:)



- 1
- 2
- 3
- 4
- 5
- 6
- 7
- 8
- 9
- 10
- 11
- 12
- 13
- 14
- 15
- 16
- 17
- 18
- 19
- 20
- 21
- 22
- 23

-

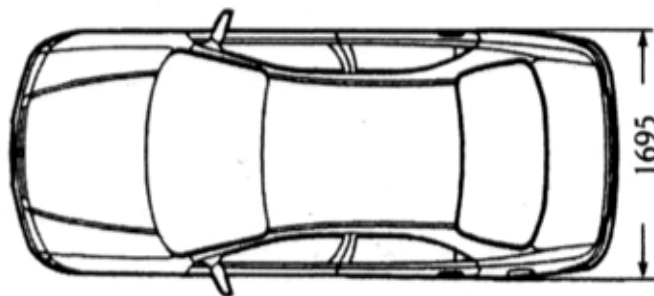
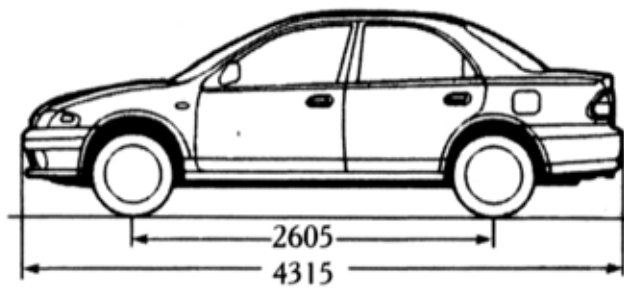
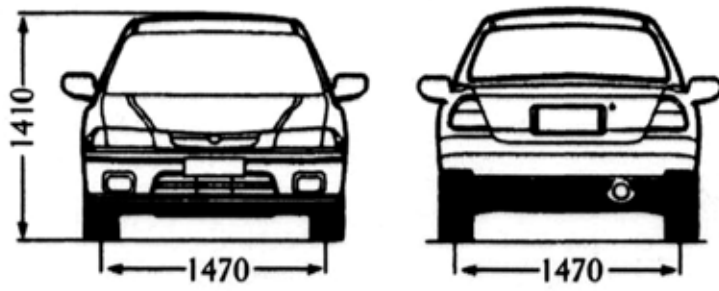
323 F/L
1382

(1 1
(1 2
(1 3
(1 4
(1 5
(1 6

()

4365 mm
1705 mm
1410 mm
2610 mm
1470 mm
1470 mm
140 mm

(2 1
(2 2
(2 3
(2 4
(2 5
(2 6
(2 7



()

1073 Kg

(4 1

	4		(5 1
2	2		(5 2
	3		(5 3
			(5 4
			(5 5
			(5 6
			(5 7
			(5 8
			(5 9
			(5 10
PP			(5 11
			(5 12
			(5 13
			(5 14
			(5 15
-	-		(5 16
-	-		
		1	(5 17
		1	(5 18



2	(7 1
	(7 2
	(7 3
	(7 4
	(7 5
	(7 6
4.105	(7 7
4.147	
185/65 R 14 82T	(7 8
185/65 R 14 82T	(7 9
14x5 1/2J J	(7 10
210 KPa	(7 11
210 KPa	(7 12



			(8 1
			(8 2
			(8 3
			(8 4
			(8 5
			(8 6
± 2		37	(8 7
± 2		33	(8 8
		370 mm	(8 9
			(8 10
		2.92	(8 11
	± 4	2 mm	(8 12
± 1		49	(8 13
	45	1	(8 14
			± 1

(9 1

(9 2

(9 3

(10 1

(10 2

(10 3

(10 4

(11 1

(11 2

235 mm

(11 3

(11 4

200 mm

(11 5

(11 6

		(12 1
R134a		(12 1 1
		(12 1 2
120 * 5		(12 1 3
		(12 1 4
		(12 1 5
	1800 -	2.6
1800 -	4419	(12 1 6
8		(12 1 7
		(12 1 8

		(12 2
		(12 2 1
		(12 2 2
8		(12 2 3
		(12 2 4
		1

60A -12V	(13 1
0.8Kw -12V	(13 2
55A.h -12V	(13 3
12KV -12V	(13 4
-	(13 5
	(13 6

— (13 7

650 750 (14 1
9 11 (14 2
500 630 (14 3
33 44 (14 4
(14 5
(14 6
(14 7

ZMD(DOHC 16 (15 1
16 VALVE) (15 2
4 (15 3
78 mm (15 4
83.6 mm (15 5
1598 cc (15 6
9:1 (15 7
80Kw in 5500RPM (15 8
145N.m in 4000RPM (15 9
(15 10



() -

(17 1

(17 2

(17 3

-

(18 1

6

(18 1 1

(18 1 2

(18 1 3

3.416	
1.842	
1.29	
0.972	
0.775	
3.214	
4.105	

(18 2

FN4A-EL

(18 2 1

(18 2 2

(18 2 3

2.816	
1.497	
1.000	
0.725	
2.648	
4.147	

-

			(19 1
			(19 2
	6L		(19 3
	94-119 KPa		(19 4
			(19 5
	300 mm		(19 6
			(19 7
()	5.2 7.2	(19 8
()	2.4 4.4	
	wax pellet type		(19 9
	83.5°c- 88°c		(19 10
	100°c		(19 11

-

	178 Km/h		(20 1	
	5.2 m		(20 2	
()	7.5 L	90	(20 3
()	8.6 L		
	10.8 s		(20 4	

-

3.4l	API service SG, SH, SJ	(21 1
2.9l	API service SG, SH, SJ	(21 2
2.7l	75W-90	(21 3
7.2l	ATF M -V	(21 4
1l	ATF M-III(DEXTRON II)	(21 5
55l	UNLEADED PETROL	(21 6
0.9l	DOT 3	(21 7
0.5l	C-SW-04	(21 8

-

(22 1

(22 2

(22 3

(22 4

(22 5

(22 6

(22 7

(22 8

-

-









